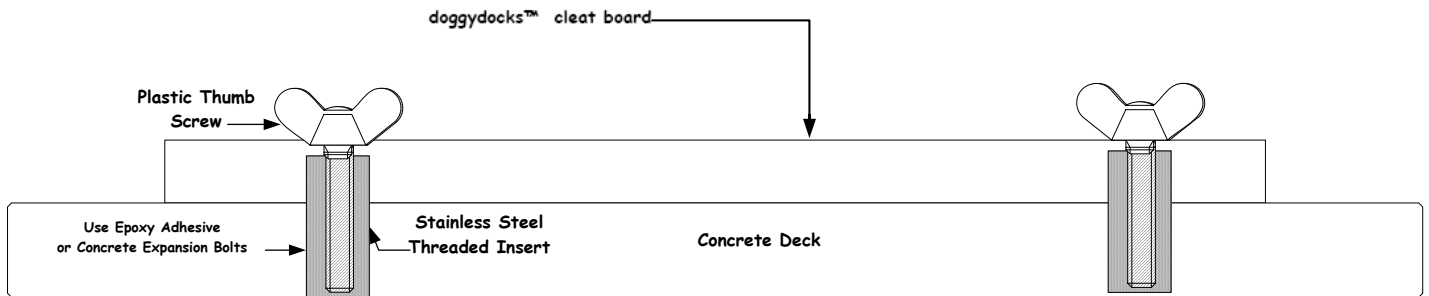


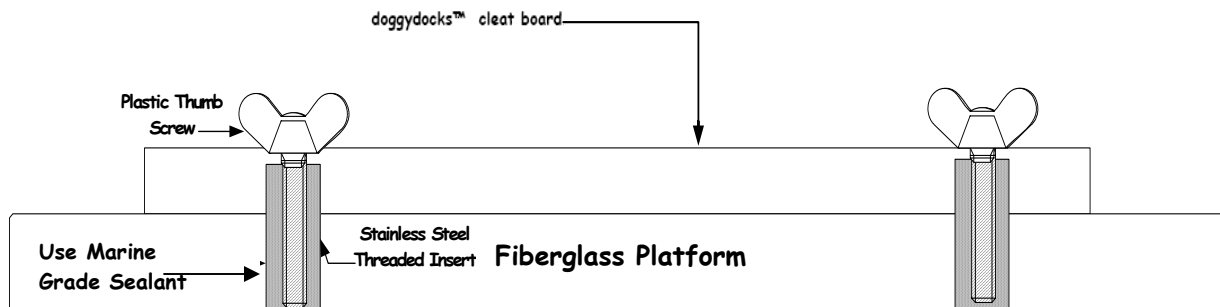
# doggydocks™ Mounting options

## Concrete Decks



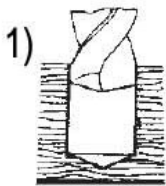
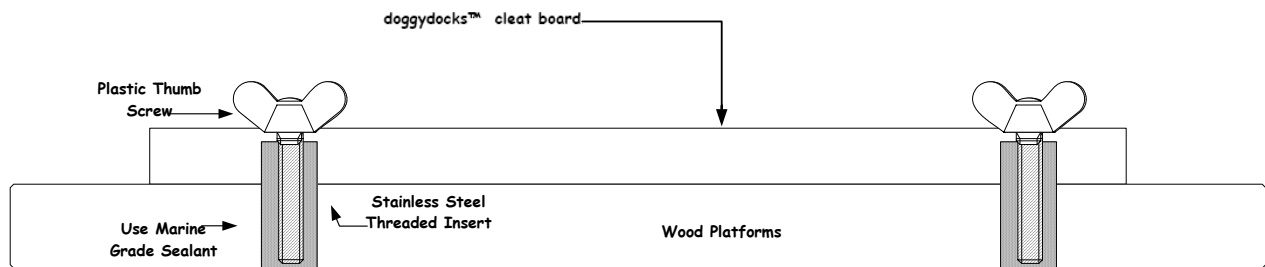
- Drill (2) holes into the doggydocks cleat board making sure you clear the hinge underneath.
- Place the doggydocks into the mater making sure it is lined up with the edge of the dock or pool.
- Mark the concrete below through the holes on the doggydocks
- Drill 3/8"-1/2" hole in concrete using a concrete drill bit
- Fill hole with 2-part epoxy adhesive
- Tap metal insert with threads so that it is flush with the concrete.
- Allow epoxy adequate time to set normally 12 hours.
- Place a washer and thumbscrew into the hole in the cleat board in line with holes in concrete
- Tighten down screws

## Fiberglass Platforms

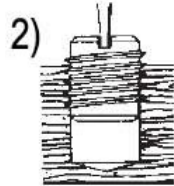


- Drill (2) holes into the doggydocks cleat board making sure you clear the hinge underneath.
- Place the doggydocks into the mater making sure it is lined up with the edge of the dock or pool.
- Mark the fiberglass platform below, through the holes on the doggydocks
- Drill 3/8"-1/2" holes in fiberglass using appropriate drill bit
- Fill hole with marine sealant
- Screw insert with flush with platform
- Allow sealant adequate time to set normally 12 hours.
- Place a washer and thumbscrew into the hole in the cleat board in line with holes in platform
- Tighten down screws

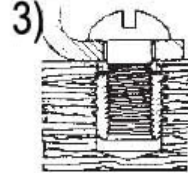
# Wood Platforms



Drill appropriate size hole.



Knife thread easily cuts into the wood.



You now have metal threads in your wood!

- Drill (2) holes into the doggydocks cleat board making sure you clear the hinge underneath.
- Place the doggydocks into the mater making sure it is lined up with the edge of the platform.
- Mark the concrete below through the holes on the doggydocks
- Drill 3/8"-1/2" hole in concrete using a concrete drill bit
- Fill hole with 2-part epoxy adhesive
- Tap metal insert with threads so that it is flush with the concrete.
- Allow epoxy adequate time to set normally 12 hours.
- Place a washer and thumbscrew into the hole in the cleat board in line with holes in concrete
- Tighten down screws